

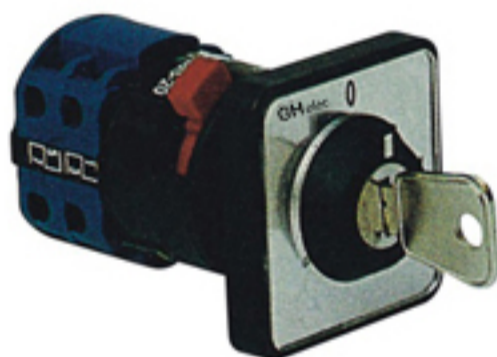
HW26S Rotary Switch



HW26S-25



HW26S-32



Introduction

HW26GS key-lock type switches are derivatives of HW26 rotary switches, installed in equipments which requires a key to lock the switch, it prevents the mis-operation of the equipments from the authorized personnel.

HW26S key-lock type switches comply with the IEC 60947-3.

Classification

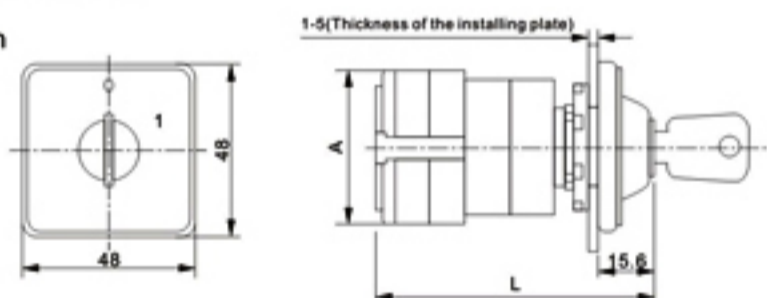
HW26GS key-lock type switches have three current ratings: 20A, 25A and 32A. And in terms of the lock design, we have A type and B type for customers to choose.

Technical parameter

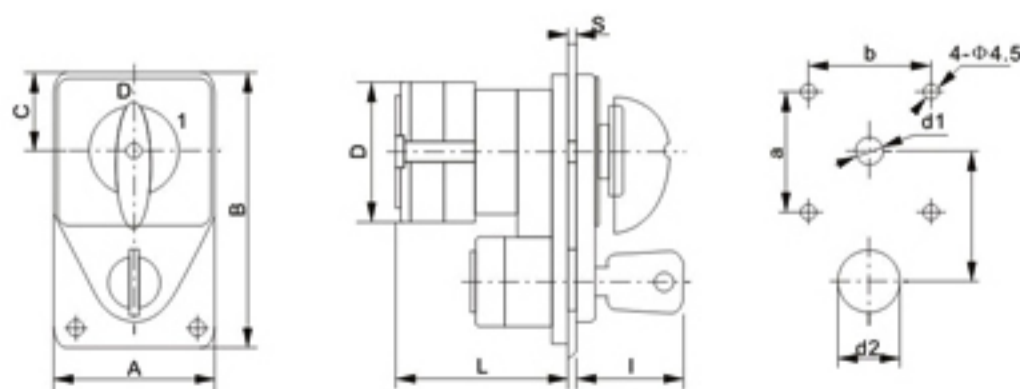
Description		HW26GS-20	HW26GS-25	HW26GS-32
Rated insulation voltage U_i	V	690	690	690
Rated working voltage U_e	V	440	440	440
Rated thermal current I_{th}	A	20	25	32
Rated working current I_{th}				
AC-21A	A	20	25	32
AC-22A	A	20	25	32
AC-23A	A	15	22	30
Power P				
AC-23A	KW	7.5	11	15
Operation				
Non-load		8500	8500	8500
Load		1500	1500	1500
Total		100000	100000	100000

Dimensions and installation

HW26S Type switch



Description	Dimensions(mm)	
	A	L
HW26GS-20	43	76.5
HW26GS-25	45.2	83



Description	Dimensions(mm)											
	A	B	C	D	L	I	S	a	b	c	d1	d2
HW26GS-20	48	84	24	43	51.5	32.5	1-4	36	36	40	φ8.5	φ20
HW26GS-25	48	84	24	45.2	45.2	32.5	1-4	36	36	40	φ8.5	φ20
HW26GS-32	64	112	32	58	58	34	1-6	48	48	48	φ10	φ34