

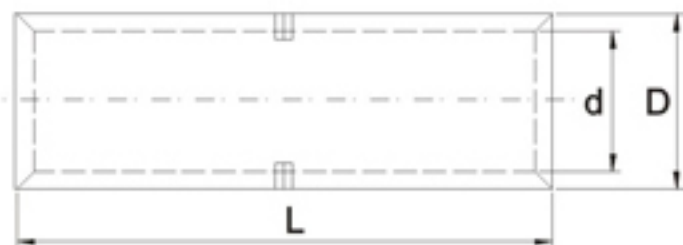
## GTY Cable Lug



**GTY-1**



**GTY-2**



GTY series are made of copper tube,it has

at least 99.8% purity, Surface is finished with tin.

GTY-1 is with round stopper,GTY-2 is with square stopper.

Type	Dimensions(mm)		
	L	D	d
GTY-1-1.5	20	3.1	1.9
GTY-1-2.5	20	4	2.8
GTY-1-4	20	4.5	3.2
GTY-1-6	25	5.1	3.7
GTY-1-10	30	6.1	4.5
GTY-1-16	35	7.3	5.7
GTY-1-25	40	9	7.2
GTY-1-35	45	10.8	8.5
GTY-1-50	50	12.5	9.8
GTY-1-70	55	14.5	11.5
GTY-1-95	60	17	13.7
GTY-1-120	65	19	15
GTY-1-150	70	21	16.7
GTY-1-185	75	23.5	19.2
GTY-1-240	80	26	21
GTY-1-300	85	30	24
GTY-1-400	90	34	27
GTY-1-500	100	38	30
GTY-1-630	110	44	35
GTY-1-800	150	50	39
GTY-1-1000	170	56	44

Type	Dimensions(mm)		
	L	D	d
GTY-2-1.5	20	3.1	1.9
GTY-2-2.5	20	4	2.8
GTY-2-4	20	4.5	3.2
GTY-2-6	25	5.1	3.7
GTY-2-10	30	6.1	4.5
GTY-2-16	35	7.3	5.7
GTY-2-25	40	9	7.2
GTY-2-35	45	10.8	8.5
GTY-2-50	50	12.5	9.8
GTY-2-70	55	14.5	11.5
GTY-2-95	60	17	13.7
GTY-2-120	65	19	15
GTY-2-150	70	21	16.7
GTY-2-185	75	23.5	19.2
GTY-2-240	80	26	21
GTY-2-300	85	30	24
GTY-2-400	90	34	27
GTY-2-500	100	38	30
GTY-2-630	110	44	35
GTY-2-800	150	50	39
GTY-2-1000	170	56	44