

## TS Series Waterproof Metal Box

### Application

Metal enclosures made from a continuous length of sheet steel double folded at the front, with back welded to the frame. Both externally and internally protected with polyester epoxy resin Grey paint to RAL-7032 texturized

- Welded studs on the back for direct fixing of mounting plate or other accessories
- perforated door reinforcement profiles allowing fixing of equipment
- concealed and easily removable hinges allowing over 120° door opening.
- Foamed-in polyurethane gasket and front rain gutter ensures high degree of protection up to IP 66.

### References and Details of Enclosures

External dimensions (mm)			enclosures				mounting plates			Dinimet assembly	19°RAC internal swing door		
height (A)	width (B)	depth (C)	reference	reference with glazed door	flange fig. opening type	D	approx weight (kg)	metal	isul.	perforated	mounting plate adjustable supports		
250	200	150	TS-2520/150	-	1	0	125	●	●				
300	250	150	TS-3025/150	TS-3025/150KT	1	A	150	●	●	●		●	
300	250	200	TS-2520/200	TS-2520/200KT	1	A	150	●	●	●	●	●	●
300	300	150	TS-33/150	TS-33/150KT	1	B	150	●	●	●	●	●	●
300	300	200	TS-33/200	TS-33/200KT	1	B	150	●	●	●	●	●	●
400	300	150	TS-43/150	TS-43/150KT	1	B	200	●	●	●		●	●
400	300	200	TS-43/200	TS-43/200KT	1	B	200	●	●	●	●	●	●
400	400	200	TS-44/200	TS-44/200KT	1	C	200	●	●	●	●	●	●
400	600	250	TS-46/250	TS-46/250KT	1	D	200	●	●	●	●	●	●
400	600	300	TS-46/300	TS-46/300KT	1	D	200	●	●	●	●	●	●
500	400	150	TS-54/150	TS-54/150KT	1	C	125	●	●	●		●	●
500	400	200	TS-54/200	TS-54/200KT	1	C	125	●	●	●	●	●	●
500	400	250	TS-54/250	TS-54/250KT	1	C	125	●	●	●	●	●	●
500	500	250	TS-55/250	TS-55/250KT	1	D	125	●	●	●	●	●	●
600	400	150	TS-64/150	TS-64/150KT	1	C	125	●	●	●		●	●
600	400	200	TS-64/200	TS-64/200KT	1	C	125	●	●	●	●	●	●
600	400	250	TS-64/250	TS-64/250KT	1	C	125	●	●	●	●	●	●
600	500	150	TS-65/150	TS-65/150KT	1	D	125	●	●	●		●	●
600	500	200	TS-65/200	TS-65/200KT	1	D	125	●	●	●	●	●	●
600	500	250	TS-65/250	TS-65/250KT	1	D	125	●	●	●	●	●	●
600	600	250	TS-66/250	TS-66/250KT	1	D	125	●	●	●	●	●	●
600	600	300	TS-66/300	TS-66/300KT	1	D	125	●	●	●	●	●	●
700	500	200	TS-75/200	TS-75/200KT	1	D	125	●	●	●	●	●	●
700	500	250	TS-75/250	TS-75/250KT	1	D	125	●	●	●	●	●	●
800	600	200	TS-86/200	TS-86/200KT	1	D	125	●	●	●	●	●	●
800	600	250	TS-86/250	TS-86/250KT	1	D	125	●	●	●	●	●	●
800	600	300	TS-86/300	TS-86/300KT	1	D	125	●	●	●	●	●	●
800	800	200	TS-88/200	TS-88/200KT	2	E	125	●	●	●	●	●	●
800	800	300	TS-88/300	TS-88/300KT	2	E	125	●	●	●	●	●	●
1000	600	250	TS-106/250	TS-106/250KT	1	D	125	●	●	●	●	●	●
1000	600	300	TS-106/300	TS-106/300KT	1	D	125	●	●	●	●	●	●
1000	800	250	TS-108/250	TS-108/250KT	2	E	125	●	●	●	●	●	●
1000	800	300	TS-108/300	TS-108/300KT	2	E	125	●	●	●	●	●	●
1000	1000	300	TS-1010/300	-	2	F	-	●	●	●	●	●	●
1200	800	300	TS-128/3000	TS-128/3000KT	2	F	-	●	●	●	●	●	●
1200	1000	300	TS-1210/300	TS-1210/300KT	2	F	-	●	●	●	●	●	●

\*Weight of enclosures with plain door      \*\*Enclosures with three point locking system.



Dimensions(mm)

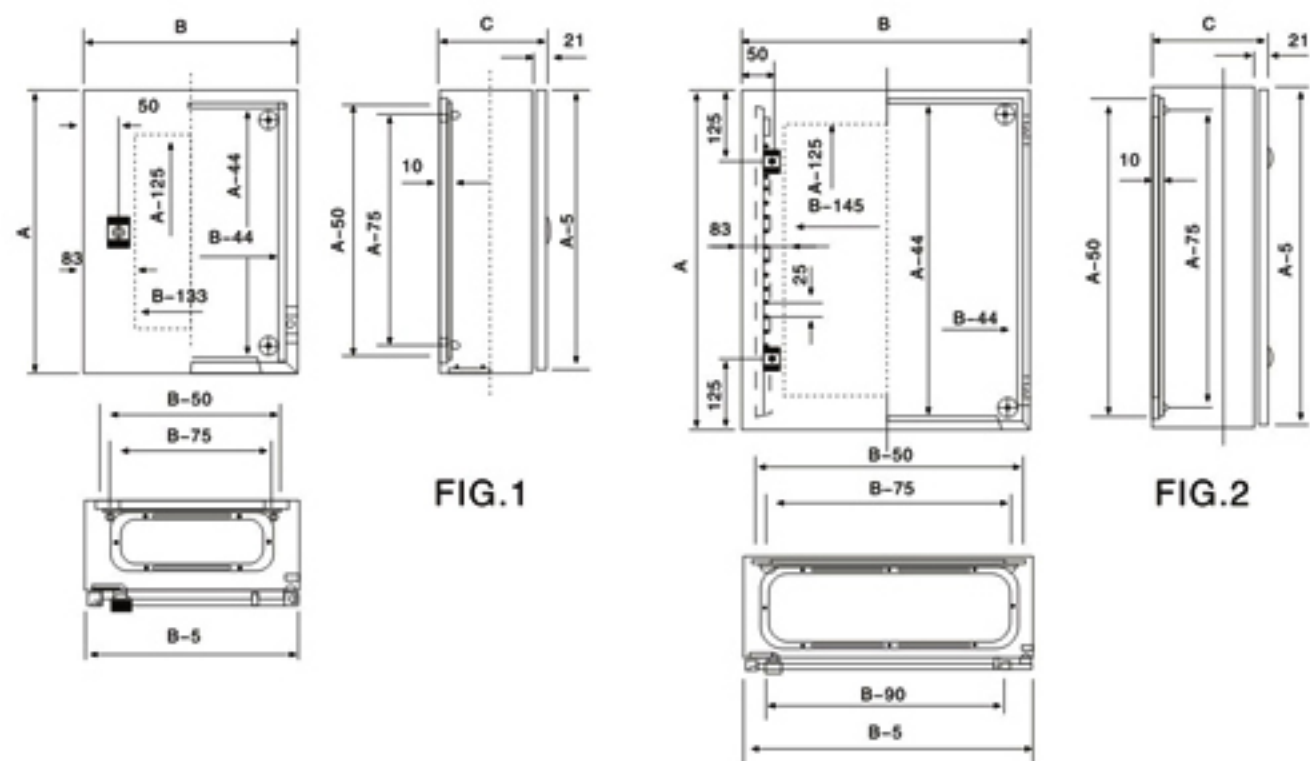
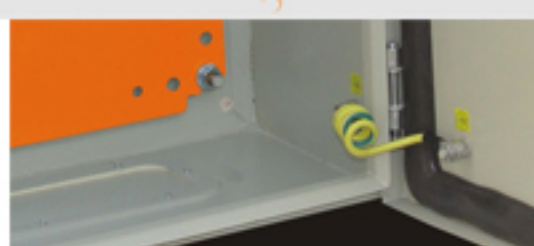


FIG.1

FIG.2

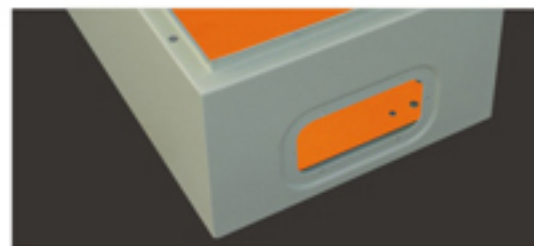


Earthing between body and door by means of M6 x 15 welded studs.

Screwed hinges easily removable allowing changing of door opening direction.



Detail of the back of the enclosure with 4M8 x 25 studs welded for fixing of mounting plate. Holes for wall mounting blanked with plastic plugs.



Detail of recessed cable gland plate ensuring a flat surface (except models TS-1010/300 TS-128/300 and TS-1210/300)

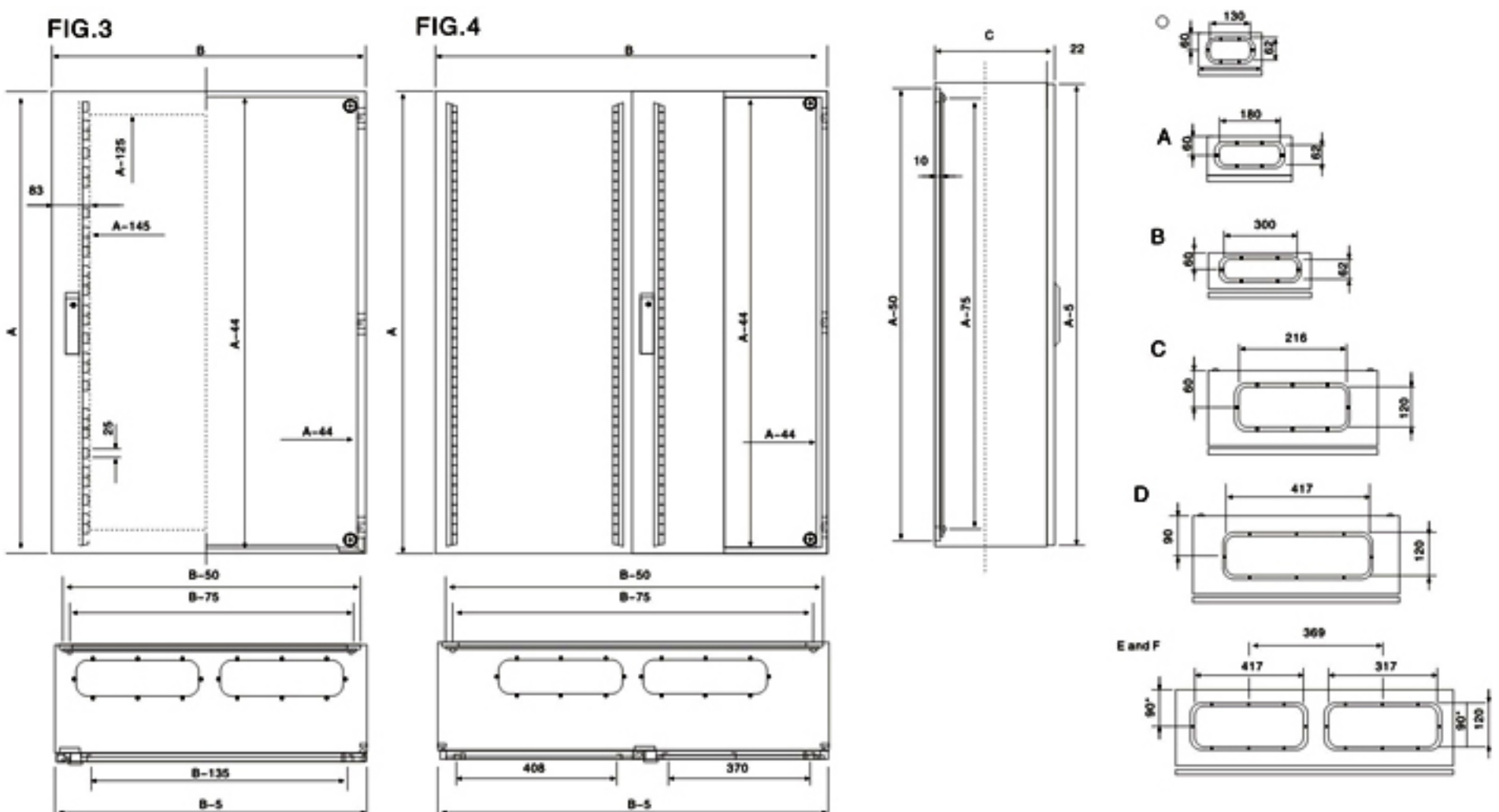


FIG.3

FIG.4

E and F